

Full Black Neon Flex,

The long-awaited full black neon flex, unveiled with a full black casing including the emitting surface is designed to display understated elegance as long as where the dark element is preferable. The glow it emits continues to be soft, consistent like our other product

Material :

LED mounted on flexible PCB in PVC resin Black jacket (For indoor, landscape and facade application)

Driver :

Remote 24 Vdc constant voltage driver or PWM driver

life time : 50,000 hours, (L70)

Ambient Temperature : -40°C ~ 55°C

IP Rating : 67

Ra : 80

Min. Cutting Unit : 55.56mm (Monochrome)

Max. Continuous Length : 10m (Monochrome)

Factory Supplied Cable :

2C x 0.75 mm², L = 3.00 m (Monochrome)

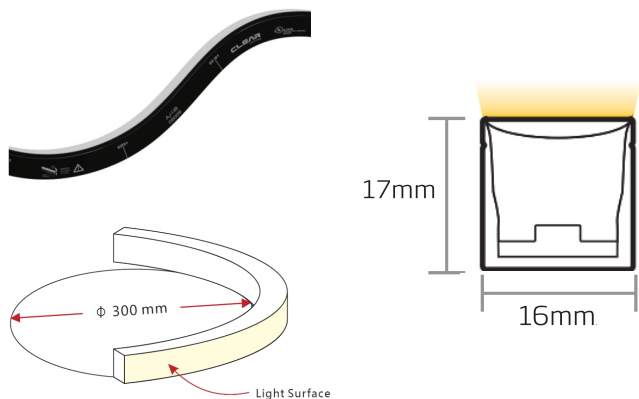
Control : on-off, 0-10V, DMX, DALI

Weight (kg) : 0.3 kg/m

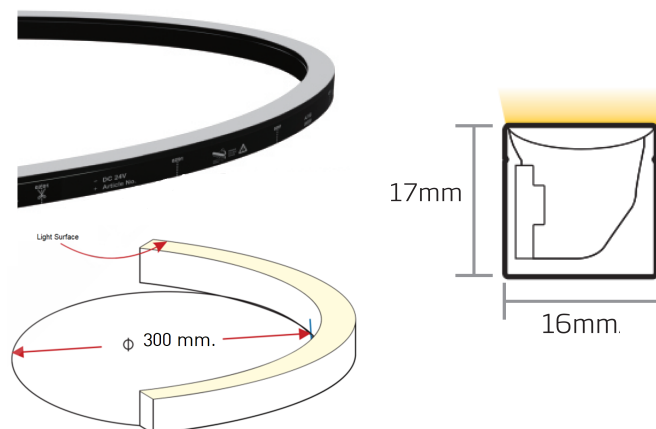




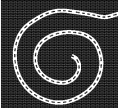
Vertical bending



Horizontal bending

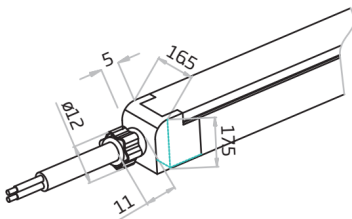
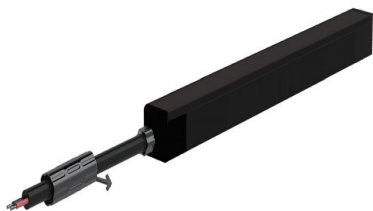


Model	Watt	CCT. (K)	Beam Angle (50%)	Color	Input (V)
SLN(HB)	12 W/m (MONO COLOR)	2700K (320lm/m) 3000K (320lm/m) 4000K (360lm/m)	110	Black	24 Vdc
SLN(VB)	12 W/m (MONO COLOR)	2700K (340lm/m) 3000K (340lm/m) 4000K (380lm/m)			

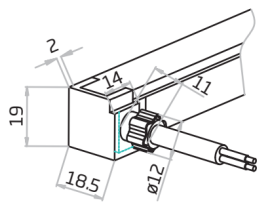


Connector (mm)

Injection-Moulded Connector

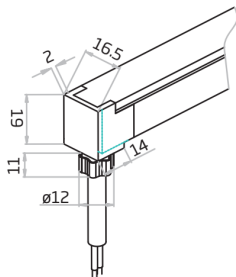


E=End

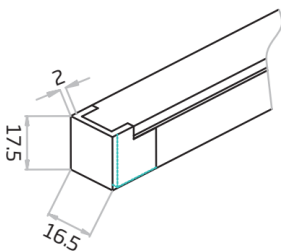


S=SIDE

Injection-Moulded Connector



B=Bottom



End cap

Mounting Profile

Serrated Aluminium Profile

